

**FABRICS
PLASTICS
WOODS**



**EURO
SEATING**

No limits to inspiration







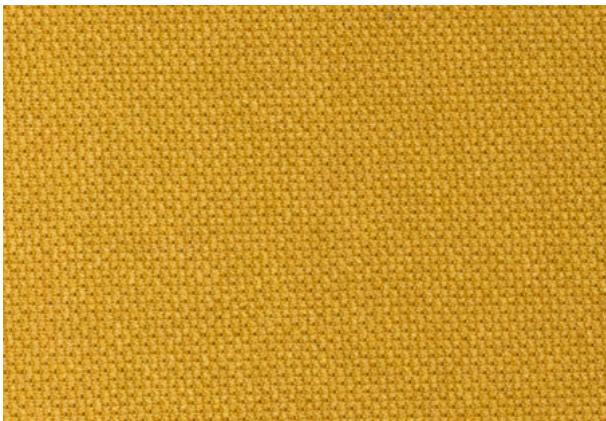
Diamante



01



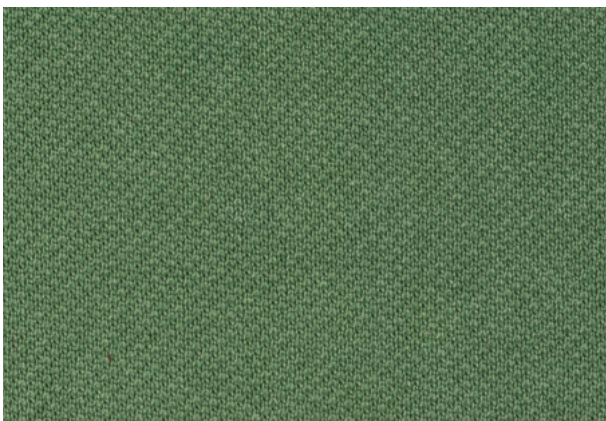
02



06



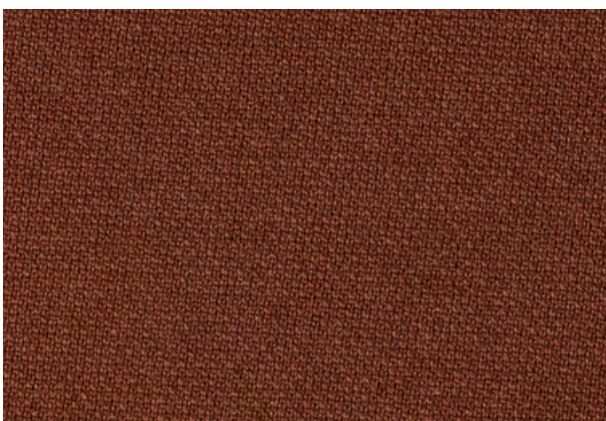
07



12



16



50



Tintura en pieza
Dyed after woven



Poliéster
Polyester



Circular elástico
Knit woven elastic

Ancho: 160 cm

Composición: 100% poliéster Trevira CS

Gramaje: 220 gr/m²

Martindale> 50.0000 ciclos

Clasificación al fuego: M-1, C-1, EN-1021-1-2, BS. 5852

Width: 160 cm

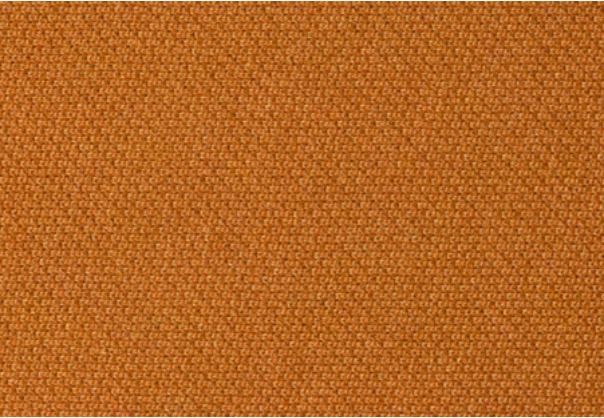
Composition: 100% polyester Trevira CS

Grammage: 220 gr/m²

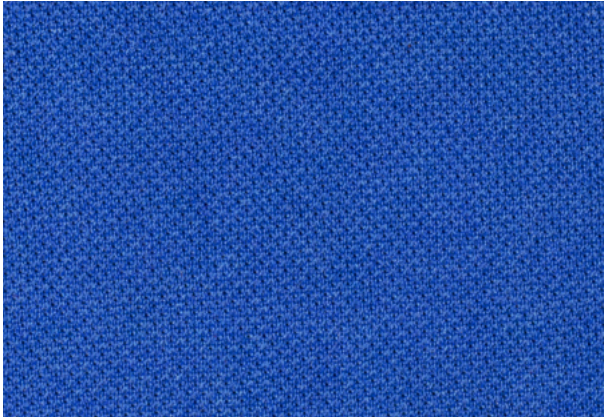
Martindale> 50.0000 cycles

Flammability: M-1, C-1, EN-1021-1-2, BS. 5852

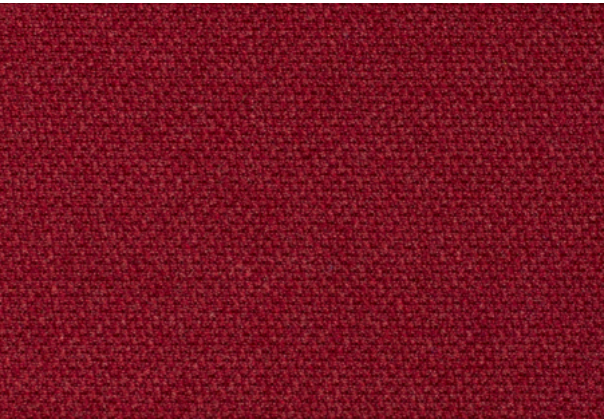
Diamante



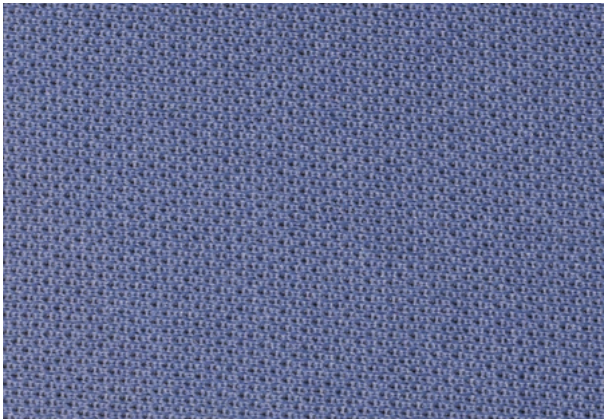
03



04



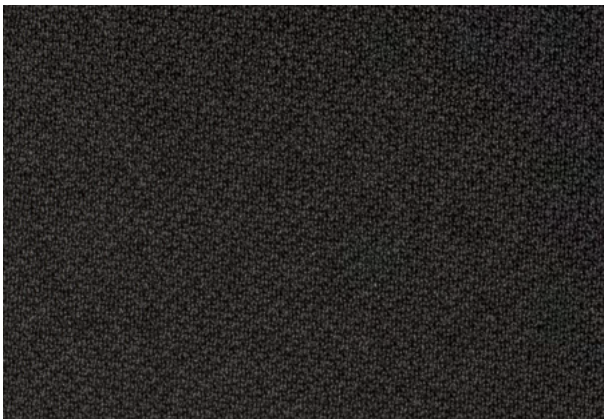
08



10



18

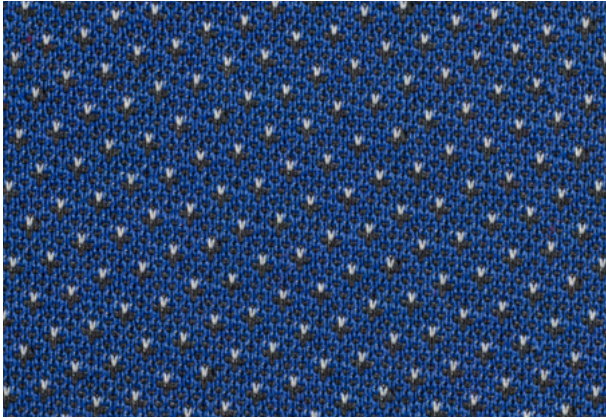


19

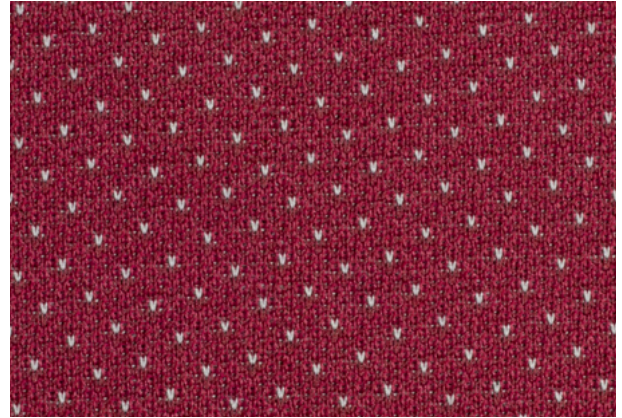


Due to restrictions related to screens and printing techniques, the colours and textures shown in this catalogue might slightly differ from the real colours and textures of the upholstery fabrics and finishes

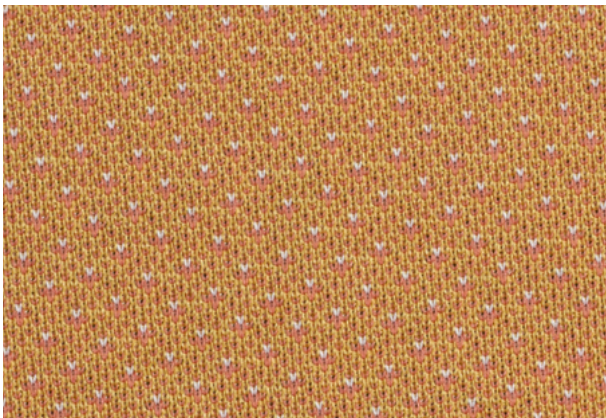
Luxor



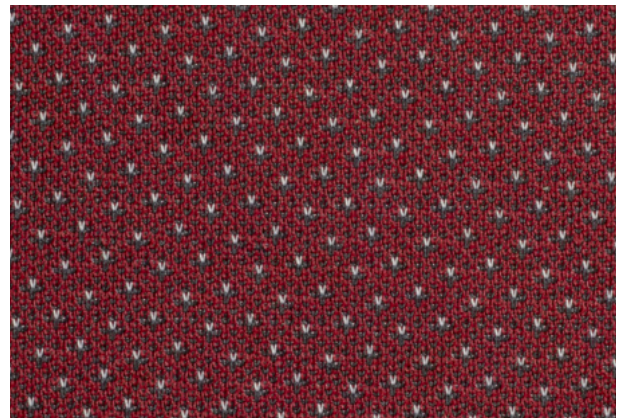
01



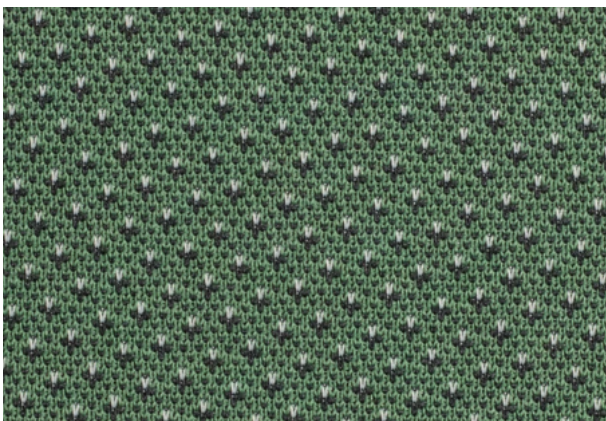
02



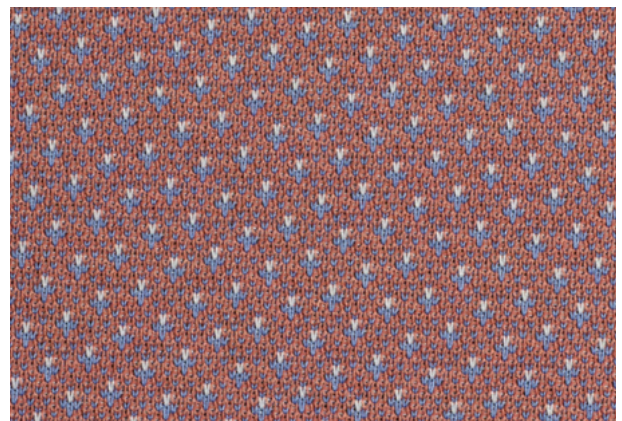
05



06



10



11



Hilo tintado
Dyed thread



Poliéster
Polyester

160



Circular elástico
Knit woven elastic

Ancho: 160 cm

Composición: 100% poliéster Trevira CS

Gramaje: 195 gr/m²

Martindale> 50.0000 ciclos

Clasificación al fuego: M-1, C-1, EN-1021-1-2, BS. 5852

Width: 160 cm

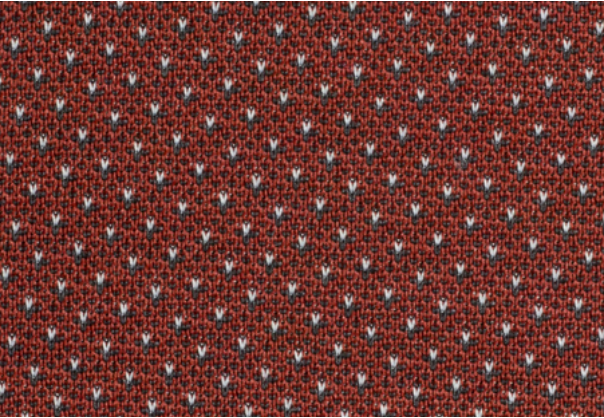
Composition: 100% polyester Trevira CS

Grammage: 195 gr/m²

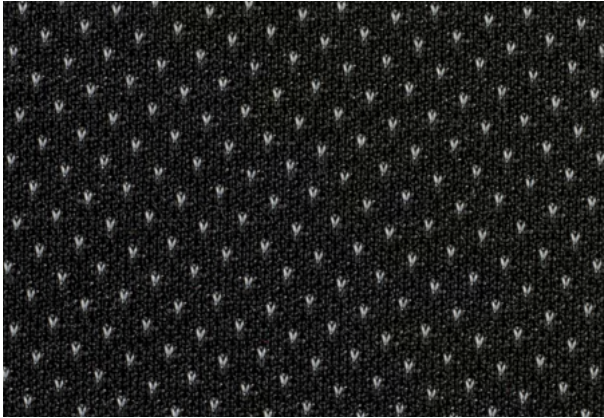
Martindale> 50.0000 cycles

Flammability: M-1, C-1, EN-1021-1-2, BS. 5852

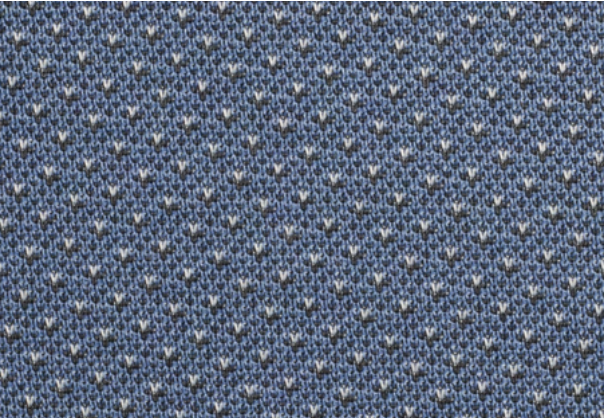
Luxor



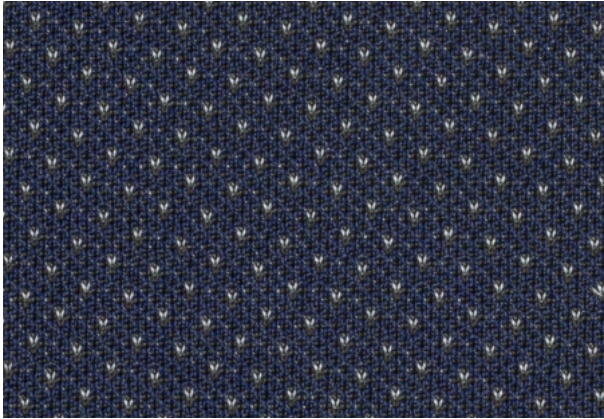
03



04



07

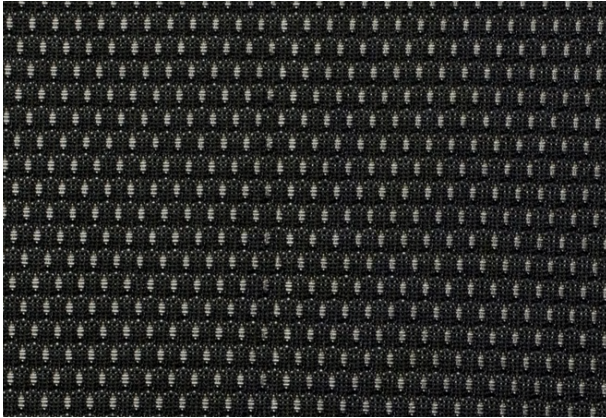


09

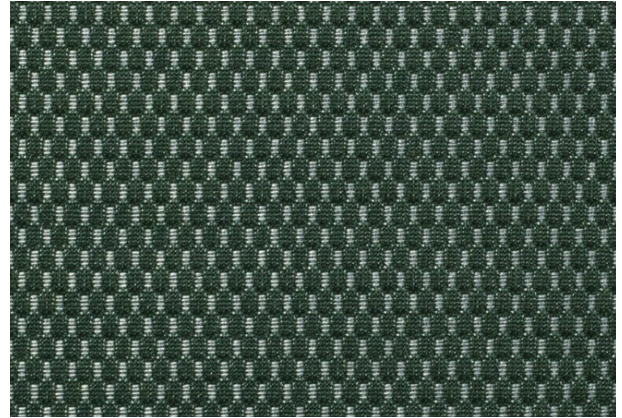


Due to restrictions related to screens and printing techniques, the colours and textures shown in this catalogue might slightly differ from the real colours and textures of the upholstery fabrics and finishes

Brillant



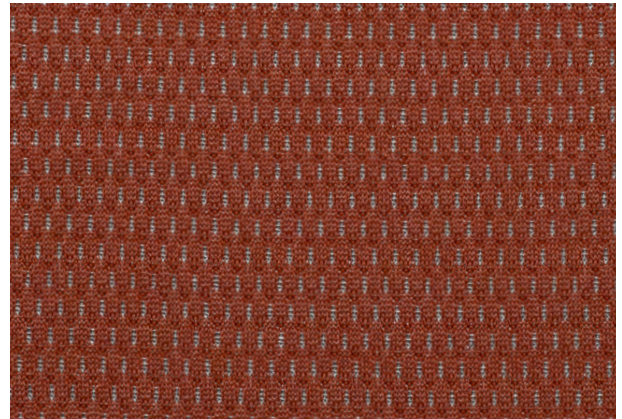
1100



1101



1105



1106



Ancho: 160 cm

Composición: 100% poliéster Trevira CS

Gramaje: 205 gr/m²

Martindale > 50.0000 ciclos

Clasificación al fuego: M-1, C-1, EN-1021-1-2, BS. 5852

Width: 160 cm

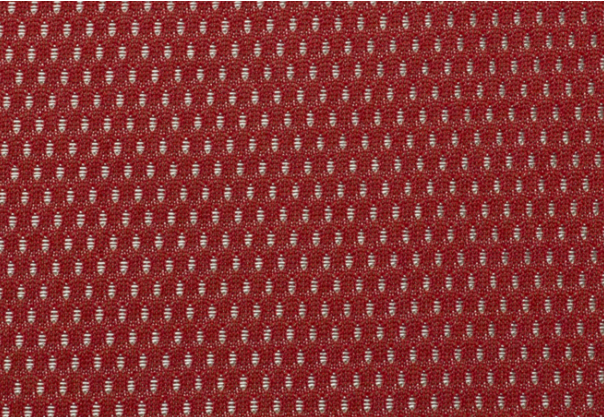
Composition: 100% polyester Trevira CS

Grammage: 205 gr/m²

Martindale > 50.0000 cycles

Flammability: M-1, C-1, EN-1021-1-2, BS. 5852

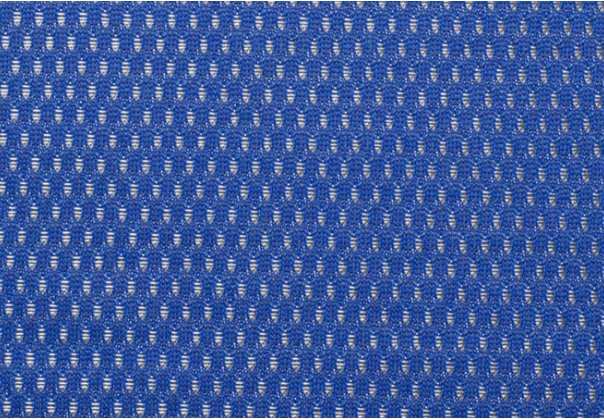
Brilliant



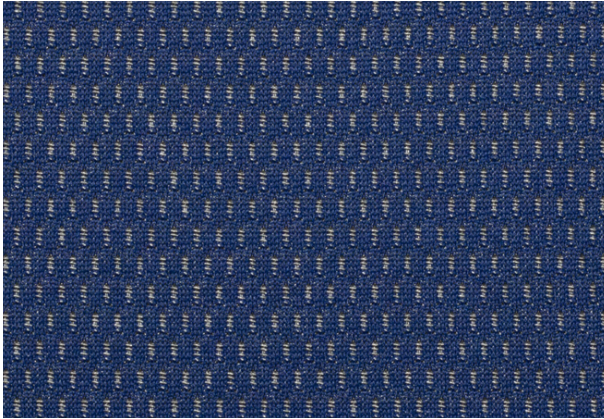
1103



1104



1107

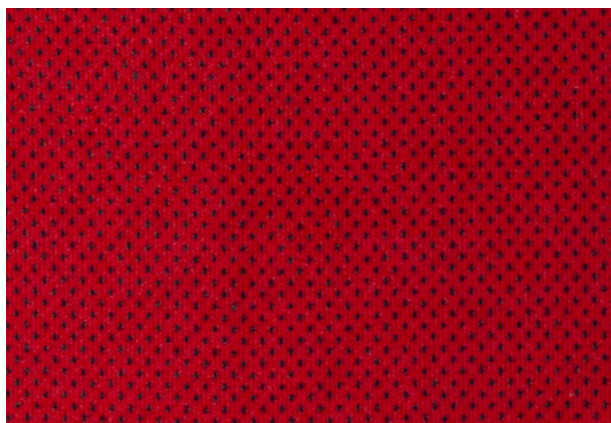


1108

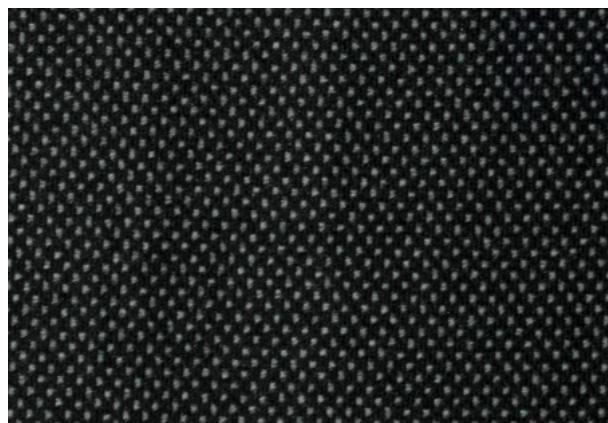


Classic

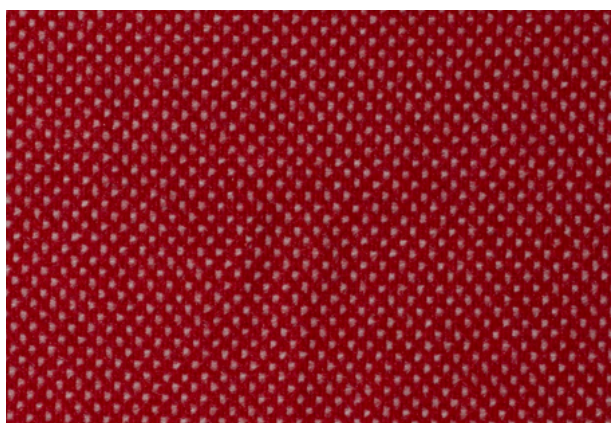
Terciopelo / Velvet



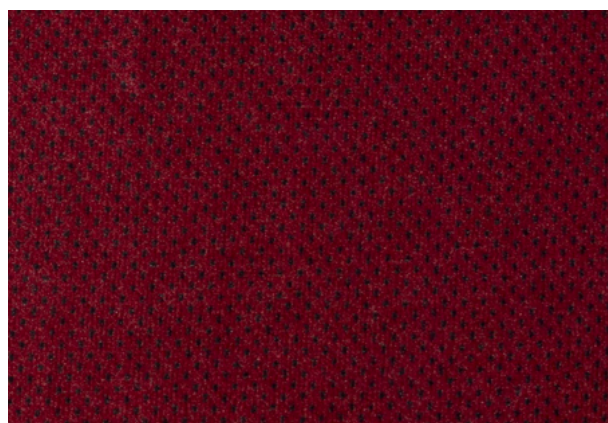
1001



1005



1008



1011



Hilo tintado
Dued thread



Circular elástico
Knit woven elastic



Terciopelo
Velvet



Poliéster
Polyester

160

Ancho: 160 cm

Composición: 100% poliéster Trevira CS

Gramaje > 245 gr/m² ±5%

Martindale > 50.0000 ciclos

Clasificación al fuego: M-1, C-1, EN-1021-1-2, BS. 5852

Width: 160 cm

Composition: 100% polyester Trevira CS

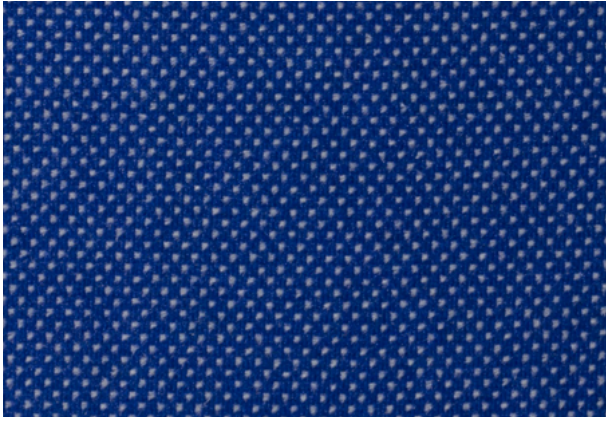
Grammage > 245 gr/m² ±5%

Martindale > 50.0000 cycles

Flammability: M-1, C-1, EN-1021-1-2, BS. 5852

Classic

Terciopelo / *Velvet*



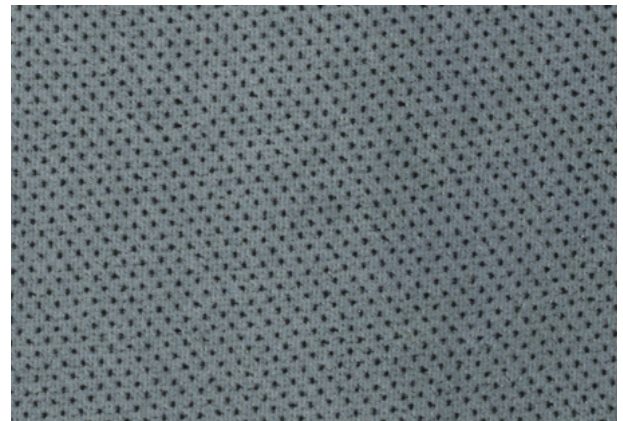
1006



1007



1021



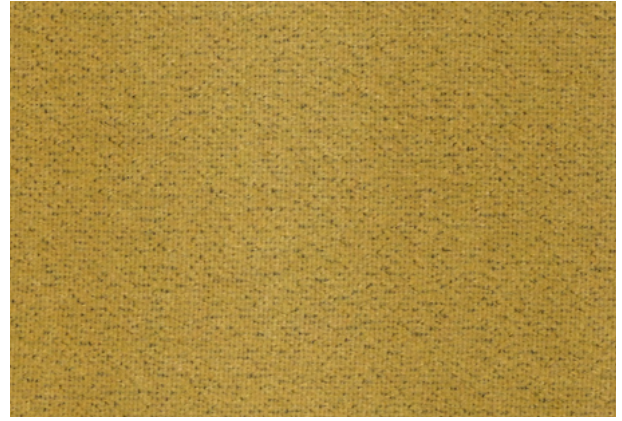
1022



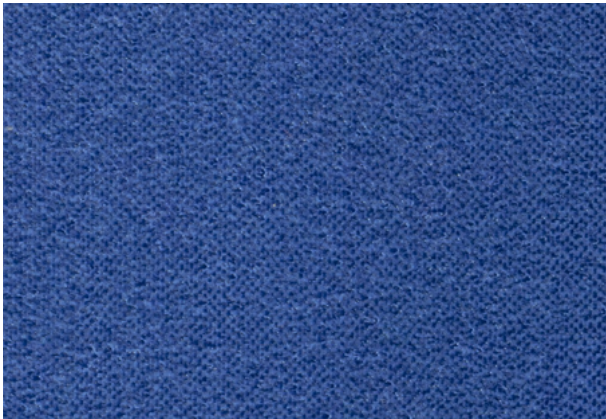
Due to restrictions related to screens and printing techniques, the colours and textures shown in this catalogue might slightly differ from the real colours and textures of the upholstery fabrics and finishes



00



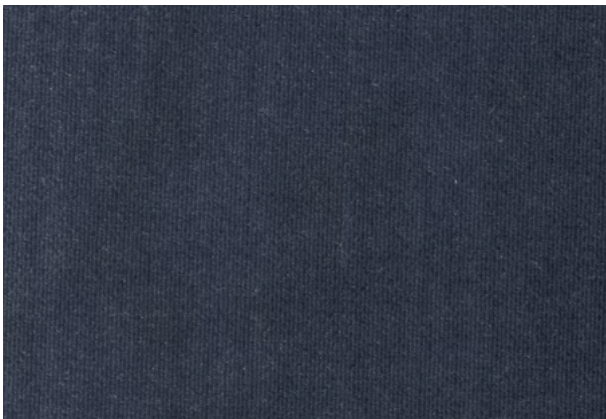
01



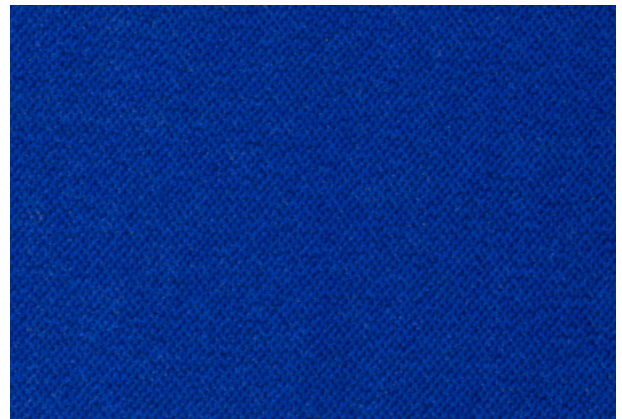
12



13



18



20



Hilo tintado
Dued thread



Poliéster
Polyester

160



Terciopelo
Velvet



Circular elástico
Knit woven elastic

Ancho: 160 cm

Composición: 100% poliéster Trevira CS

Gramaje: 245 gr/m² ±5%

Martindale > 50.0000 ciclos

Clasificación al fuego: M-1, C-1, EN-1021-1-2, BS. 5852

Width: 160 cm

Composition: 100% polyester Trevira CS

Grammage: 245 gr/m² ±5%

Martindale > 50.0000 cycles

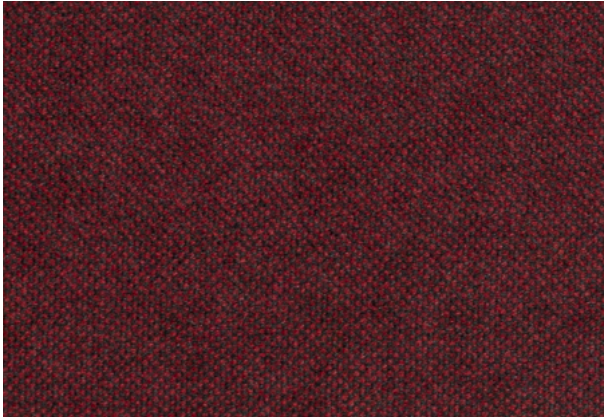
Flammability: M-1, C-1, EN-1021-1-2, BS. 5852

Pantone

Terciopelo / Velvet



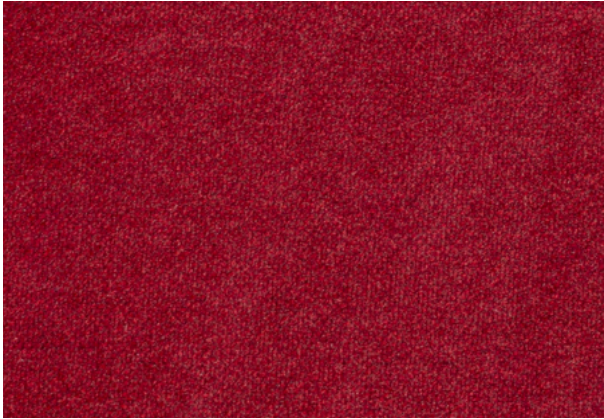
03



08



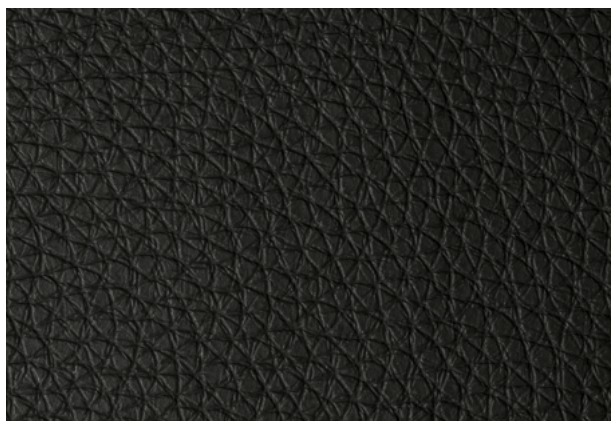
14



16



Due to restrictions related to screens and printing techniques, the colours and textures shown in this catalogue might slightly differ from the real colours and textures of the upholstery fabrics and finishes



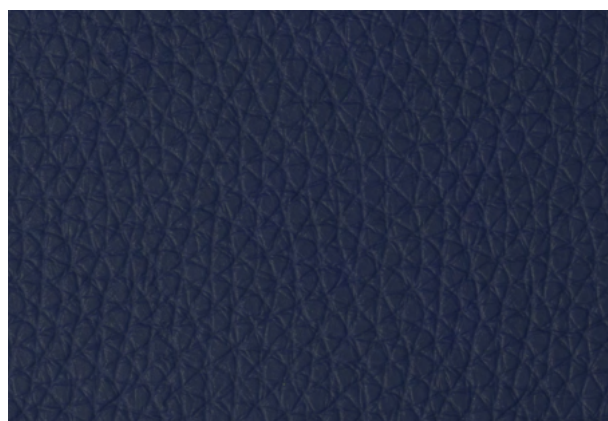
01



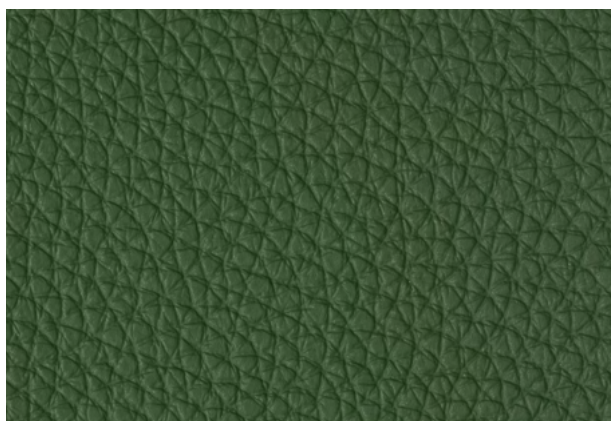
02



05



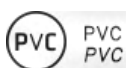
06



09



10



Eficaz contra hongos y bacterias
Effective against fungus and bacteria



Solidez del color a la luz artificial
Color-fast to artificial light



Resistente a entornos salinos
Resistant to salty environment

Ancho: 160 cm

Composición: 94% PVC, 6% Poliamida

Gramaje: 960 gr/m² ±10%

Martindale > 160.0000 ciclos

Clasificación al fuego: M-2, Opcional M-1

Width: 160 cm

Composition: 94% PVC, 6% Polyamide

Grammage: 960gr/m² ±10%

Martindale > 160.0000 cycles

Flammability: M-2, Optional M-1

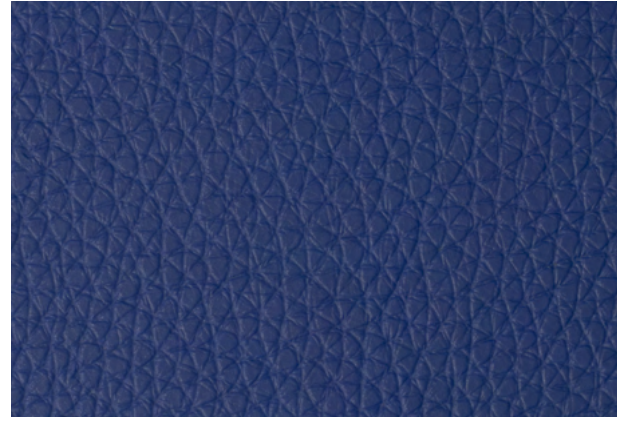


Acapulco

Cuero Artificial / *Artificial Leather*



03



04



07



08



11



12



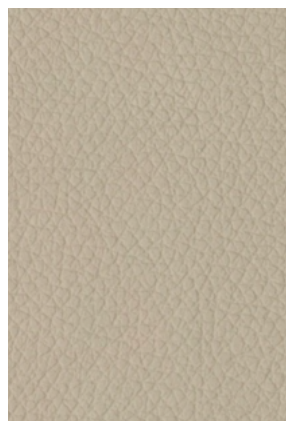
Due to restrictions related to screens and printing techniques, the colours and textures shown in this catalogue might slightly differ from the real colours and textures of the upholstery fabrics and finishes



beige · 63269



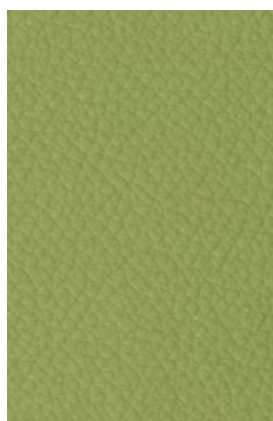
sand · 63259



light stone · 63473



stone · 75577



green · 11147



light green · 11149



yellow · 80452



light orange · 80453



bordeaux · 21832



purple · 90298



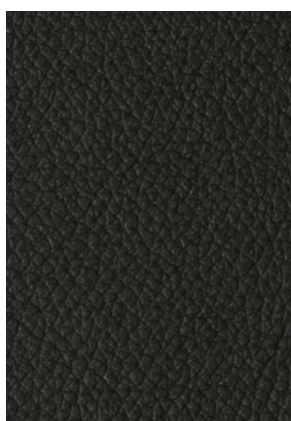
lila · 90259



dark blue · 31917



navy · 31920



black · 75052



grey · 75051



blue-grey · 32003

Dynactiv 175

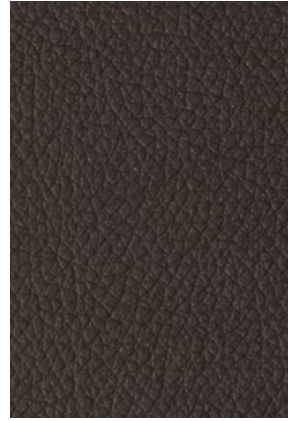
Cuero Artificial / Artificial Leather



dark stone · 44824



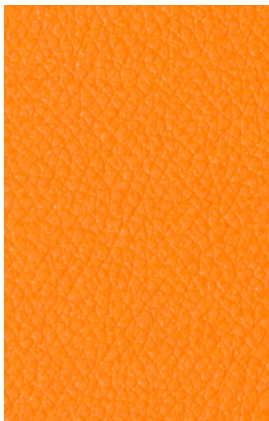
brown · 44702



wenge · 44694



dark green · 11148



orange · 21830



red · 21831



pink · 21834



fuchsia · 21833



green water · 11141



green water · 11150



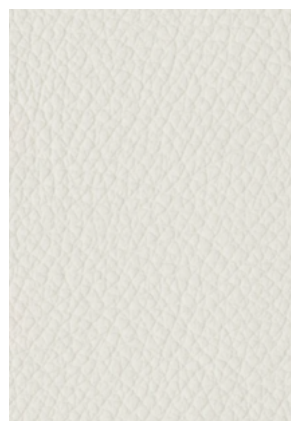
sky blue · 31922



blue · 31921



lavender · 32004



white · 63258



Eficaz contra hongos y bacterias
Effective against fungus and bacteria



Solidez del color a la luz artificial
Color-fast to artificial light



Resistente a entornos salinos
Resistant to salty environment

Ancho: 140 cm

Composición: 80% PVC, 20% Poliéster

Gramaje: 655 gr/m² ±2%

Martindale > 150.0000 ciclos

Clasificación al fuego: M-2, Opcional M-1

Width: 140 cm

Composition: 80% PVC, 20% Polyester

Grammage: 655 gr/m² ±2%

Martindale > 150.0000 cycles

Flammability: M-2, Optional M-1

Serie 100

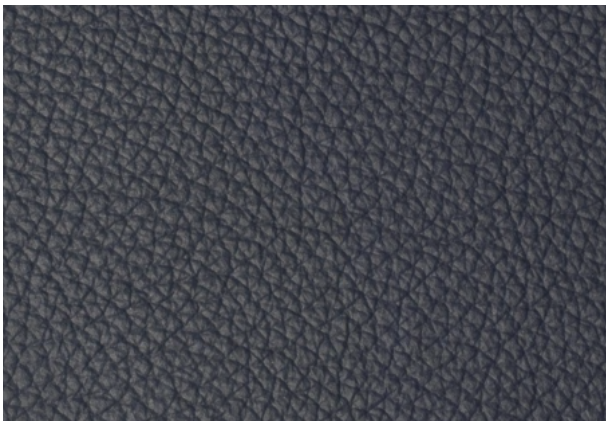
Piel Natural / *Natural Leather*



102



103



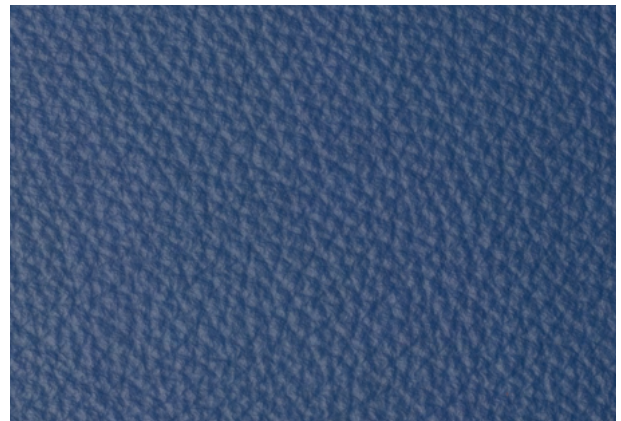
114



121



145



147



Tamaño aprox: 5m²

Composición: Piel 100% Natural

Grosor: 1.0 - 1.2 mm

Solidez del color: EN ISO 11640, EN ISO 150-B02

Clasificación al fuego: UNE EN 1021-1&2

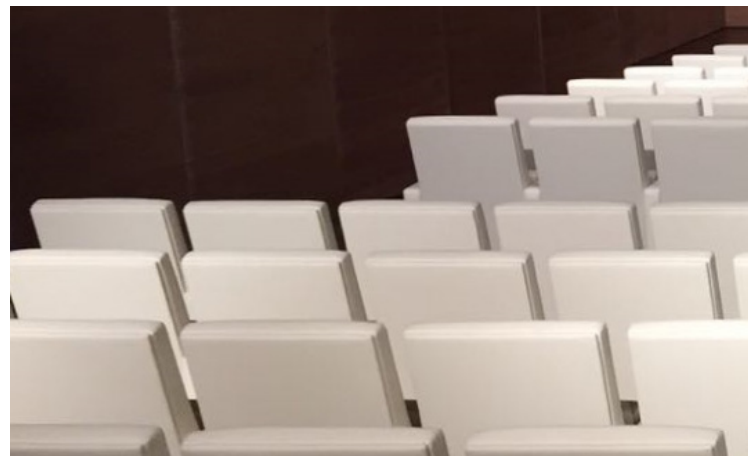
Average size: 5m² (sq.m.)

Composition: 100% Genuine Leather

Thickness: 1.0 - 1.2 mm

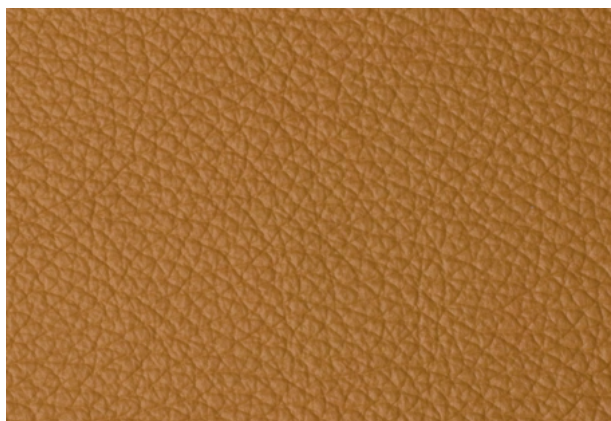
Rub & light fastness: EN ISO 11640, EN ISO 150-B02

Flammability: UNE EN 1021-1&2



Serie 100

Piel Natural / *Natural Leather*



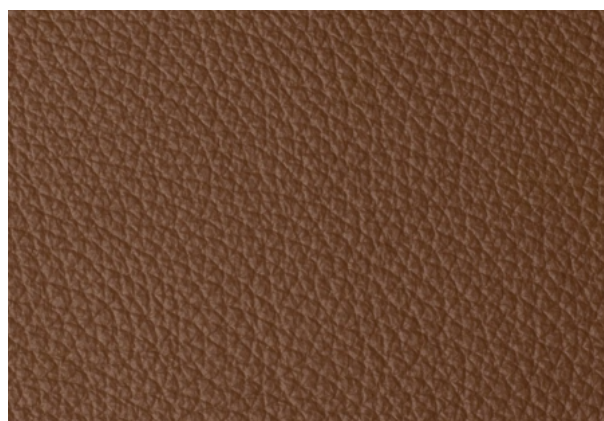
104



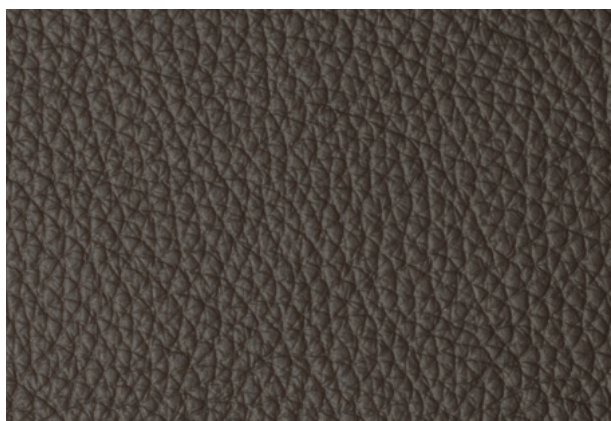
108



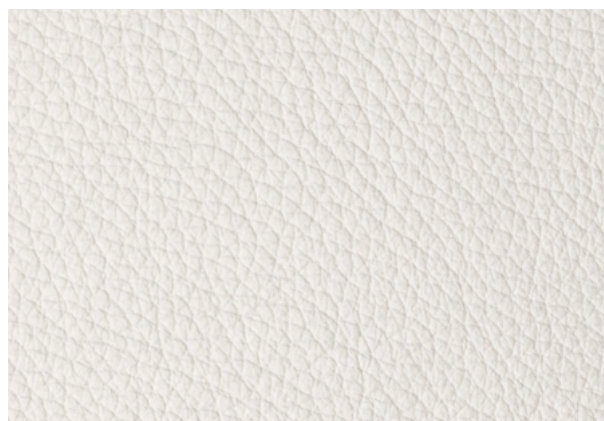
127



141



148



179



Plásticos / *Plastics*



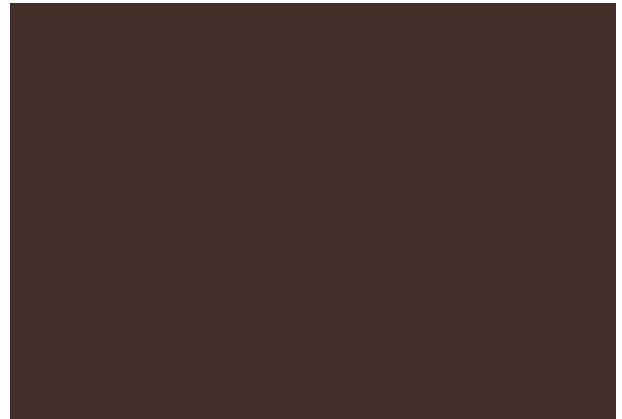
Amarillo / *Yellow* · Ral 1016



Rojo / *Red* · Ral 3020



Gris / *Grey* · Ral 7004



Marron / *Brown* · Ral 8017



Fabricamos en cualquier color de la gama RAL a partir de más de 500 unidades.



Plásticos / *Plastics*



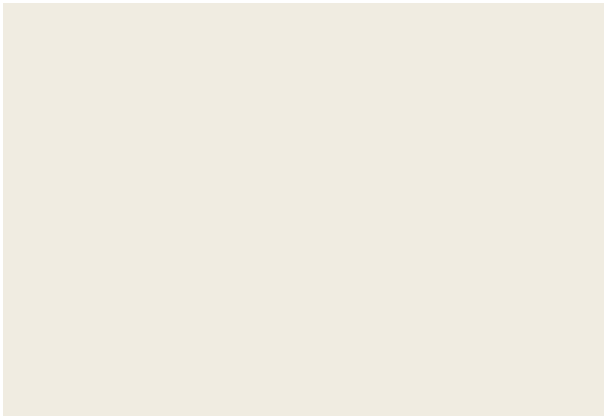
Azul / *Blue* · Ral 5017



Verde / *Green* · Ral 6018



Negro / *Black* · Ral 9005



Blanco / *White* · Ral 9010



We manufacture in any color of the RAL range from more than 500 units.



Due to restrictions related to screens and printing techniques, the colours and textures shown in this catalogue might slightly differ from the real colours and textures of the upholstery fabrics and finishes

Plásticos / *Plastics*



Natural / *Natural* · P01



Avellana / *Hazelnut* · P02



Nogal / *Walnut* · P03





P 10



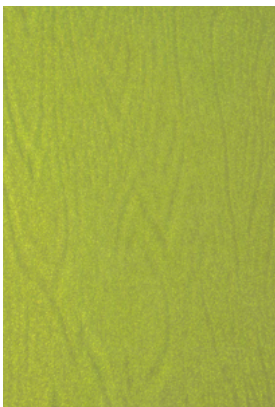
P 11



P 12



P 13



P 14



P 15



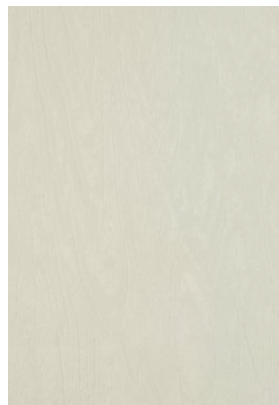
P 16



P 17



P 18



P 19



P 20



Maderas / Woods



ME 00



ME 01



ME 02



ME 11



ME 14



ME 21



ME 30



ME 31



ME 32



ME 48



ME 50



ME 99

Maderas / Woods

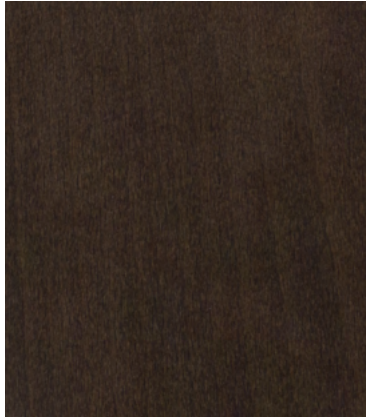
*Coste extra/Extra cost



ME 03



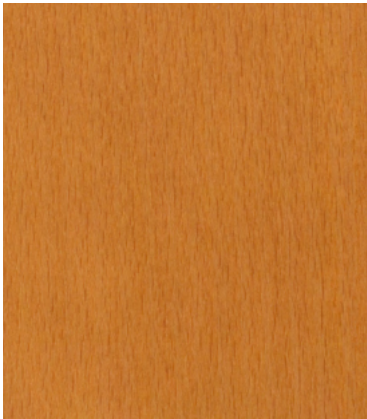
ME 07



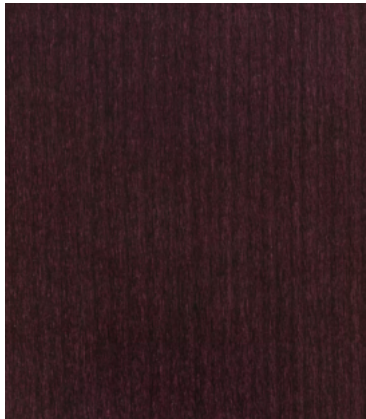
ME 09



ME 27



ME 28



ME 29



ME 37



ME 44

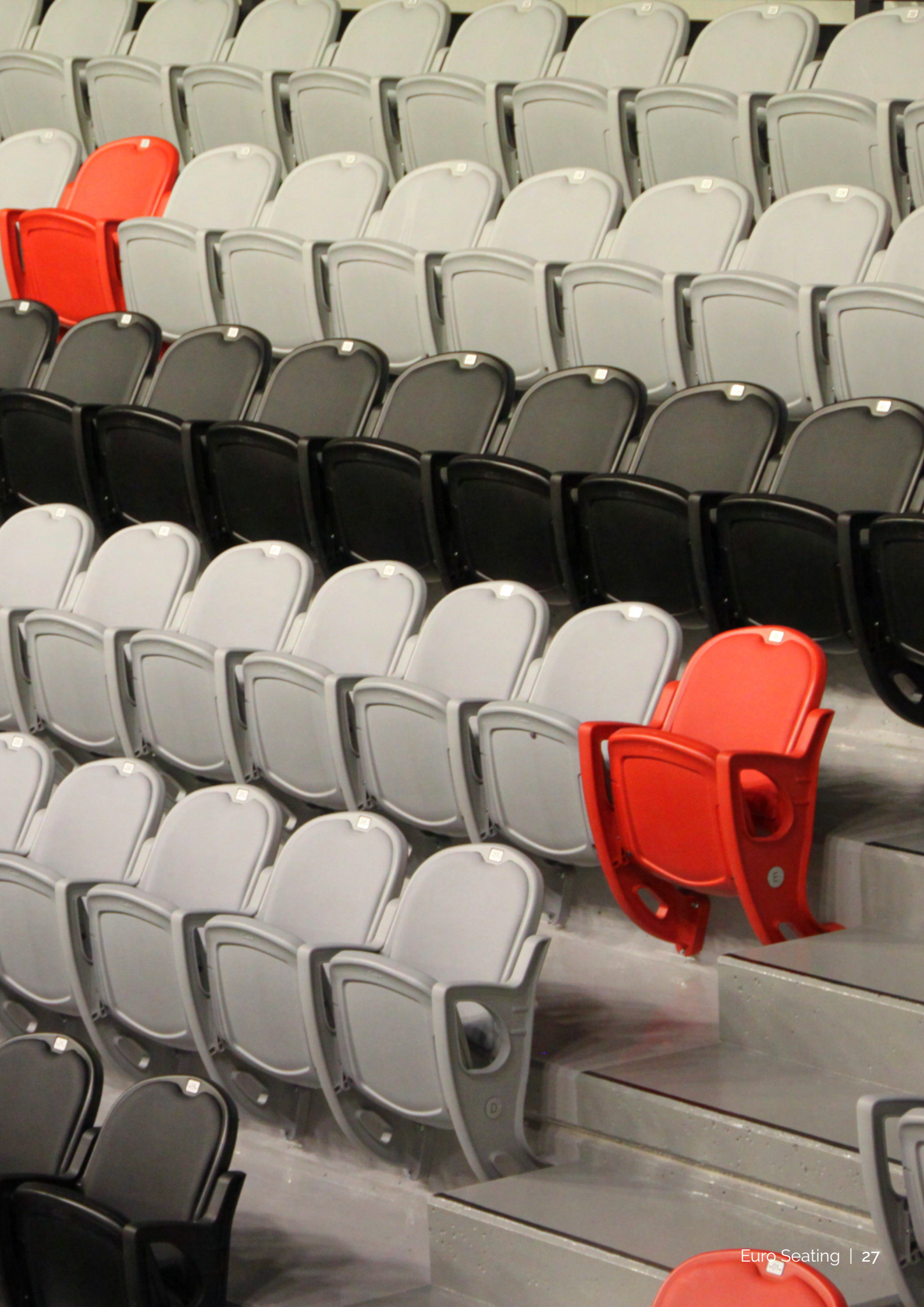


ME 46



Due to restrictions related to screens and printing techniques, the colours and textures shown in this catalogue might slightly differ from the real colours and textures of the upholstery fabrics and finishes







**EURO
SEATING**

No limits to inspiration

**EURO SEATING
HEADQUARTERS**

Polígono el Ram, nº 11
26280 Ezcaray, La Rioja
España
Tel.: +34 941 427 450
Fax: +34 941 427 218
euroseating@euroseating.com
www.euroseating.com

EURO SEATING AMERICA

Ctr. Tlajomulco – San Isidro Mazatepec nº 615 F
45640 Santa Cruz de las Flores, Jalisco,
México
Tel.: (+52) 33 37 96 01 56
Tel.: (+52) 33 37 96 52 82
Tel.: (+52) 33 36 12 17 50
euro.seating@euroseating-america.com
www.euroseating-america.com

